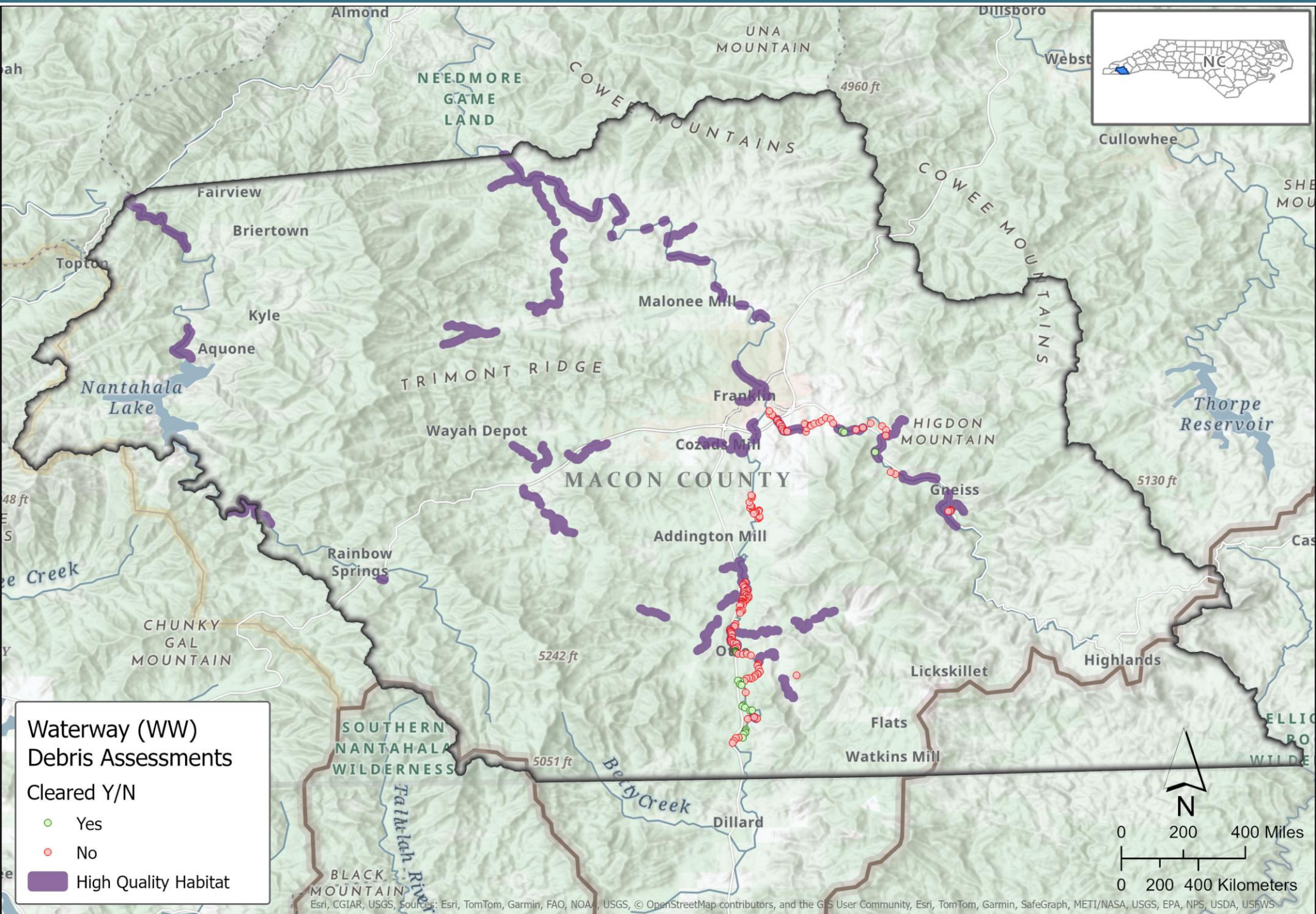


Macon County, NC WW Debris Assessments & High-Quality Habitats

U.S. ARMY CORPS OF ENGINEERS | EMERGENCY OPERATIONS



Esri, CGIAR, USGS, Sources: Esri, TomTom, Garmin, FAO, NOAA, USGS, © OpenStreetMap contributors, and the GIS User Community, Esri, TomTom, Garmin, SafeGraph, METI/NASA, USGS, EPA, NPS, USDA, USFWS